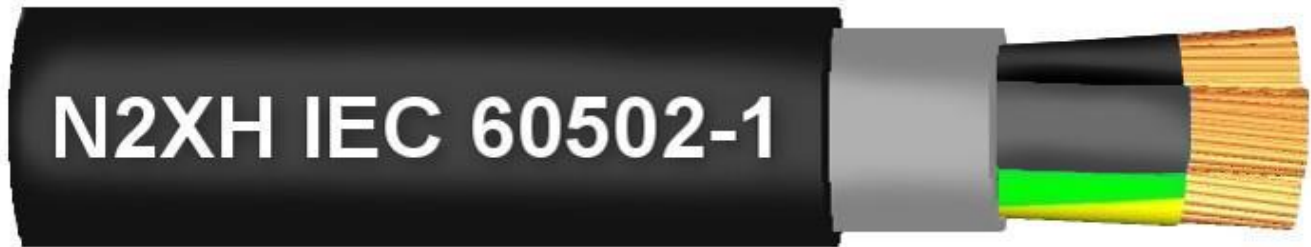


# N2XH IEC 60502-1

XLPE FRNC 0.6–1kV low voltage power cable, halogen-free



## Application

These power cables are used for electricity supply in low voltage installation system. They are well adapted to underground use in industrial applications with an additional mechanical protection. These cables can be fixed on cable trays, within conduits or fixed to walls.

## Construction

<b>Conductor</b>	: Up to 35mm <sup>2</sup> : Class 1 solid copper conductor to 16mm <sup>2</sup> Above 35mm <sup>2</sup> : Class 2 stranded copper conductor
<b>Insulation</b>	: XLPE (Cross-Linked Polyethylene) Type 2X11
<b>Sheath</b>	: LSZH (Low Smoke Zero Halogen) Type HM4
<b>Voltage rating</b>	: 600V – 1.000V

## Core Identification

<b>1 core</b>	: Black
<b>2 cores</b>	: Blue, Brown
<b>3 cores</b>	: Brown, Black, Grey
<b>3 cores incl. earth</b>	: Brown, Blue, Green/Yellow
<b>4 cores</b>	: Blue, Brown, Black, Grey
<b>4 cores incl. earth</b>	: Brown, Black, Grey, Green/Yellow
<b>5 cores</b>	: Blue, Brown, Black, Grey, Black
<b>5 cores incl. earth</b>	: Blue, Brown, Black, Grey, Green/Yellow

## Outer Sheath Colours

<b>Available colours</b>	: Black
--------------------------	---------

## Installation recommendations

<b>Temperature rating fixed</b>	: -20°C to 90°C
---------------------------------	-----------------

T : +31 (0)168 468 100

E : [sales@incore-cables.com](mailto:sales@incore-cables.com)

I : [www.incore-cables.com](http://www.incore-cables.com)

# N2XH IEC 60502-1

## Standards applied

VDE0274 Part 604

HD 604 S1

IEC 60332-3, 24 (Cat. C)

BS EN 60228

BS 5099

BS EN 62230

## Range and Dimensions

Article code	Number of cores	Nominal cross sectional area mm <sup>2</sup>	Nominal thickness of insulation mm	Nominal overall diameter mm	Nominal weight kg/km
D3201C1.5BAKBK4	1	1.5	0.7	6.6	60
D3201C2.5BAKBK4	1	2.5	0.7	7	75
D3201C004BAKBK4	1	4	0.7	7.6	90
D3201C006BAKBK4	1	6	0.7	6.5	115
D3201C010BAKBK4	1	10	0.7	7.6	165
D3201C016BAKBK4	1	16	0.7	8.6	230
D3201C025BAKBK4	1	25	0.9	11.1	340
D3201C035BAKBK4	1	35	0.9	12	440
D3201C050BAKBK4	1	50	1	12.5	570
D3201C070BAKBK4	1	70	1.1	15	795
D3201C095BAKBK4	1	95	1.1	17	1055
D3201C120BAKBK4	1	120	1.3	17.65	1315
D3201C150BAKBK4	1	150	1.4	21	1600
D3201C185BAKBK4	1	185	1.6	23	1975
D3201C240BAKBK4	1	240	1.7	24.4	2525
D3201C300BAKBK4	1	300	1.8	26	3150
D3202C1.5BWWBK4	2	1.5	0.7	12	125
D3202C2.5BWWBK4	2	2.5	0.7	12.1	155
D3202C004BWWBK4	2	4	0.7	13	195
D3202C006BWWBK4	2	6	0.7	14	295
D3202C010BWWBK4	2	10	0.7	14	390
D3202C016BWWBK4	2	16	0.7	16.2	560
D3202C025BWWBK4	2	25	0.9	19	850
D3202C035BWWBK4	2	35	0.9	21.4	1010
D3202C050BWWBK4	2	50	1	24.8	1364
D3202C070BWWBK4	2	70	1.1	28.9	1924
D3202C095BWWBK4	2	95	1.1	32.9	2578
D3202C120BWWBK4	2	120	1.3	37.7	3307
D3202C150BWWBK4	2	150	1.4	40.9	4005
D3202C185BWWBK4	2	185	1.6	45.3	4964
D3202C240BWWBK4	2	240	1.7	52.1	6503
D3202C300BWWBK4	2	300	1.8	58.3	8219
D3203C1.5BBABK4	3	1.5	0.7	12	145
D3203C2.5BBABK4	3	2.5	0.7	13	180
D3203C004BBABK4	3	4	0.7	14	235
D3203C006BBABK4	3	6	0.7	15	325
D3203C010BBABK4	3	10	0.7	15.4	485
D3203C016BBABK4	3	16	0.7	17.1	705
D3203C025BBABK4	3	25	0.9	20.5	1080
D3203C035BBABK4	3	35	0.9	22.8	1425
D3203C050BBABK4	3	50	1	26.5	1840
D3203C070BBABK4	3	70	1.1	30.1	2540
D3203C095BBABK4	3	95	1.1	34.1	3430
D3203C120BBABK4	3	120	1.3	39.1	4440
D3203C150BBABK4	3	150	1.4	42.2	5380
D3203C185BBABK4	3	185	1.6	46.7	6920
D3203C240BBABK4	3	240	1.7	53.5	8420
D3203C300BBABK4	3	300	1.8	62.7	10927
D3203C400BBABK4	3	400	2	69.9	13709
D3204C016BBEBK4	3 + earth	16 / 10	0.7	18.5	779
D3204C025BBEBK4	3 + earth	25 / 16	0.9	22.1	1175
D3204C035BBEBK4	3 + earth	35 / 16	0.9	24.3	1480
D3204C050BBEBK4	3 + earth	50 / 25	1	28.2	2031
D3204C070BBEBK4	3 + earth	70 / 35	1.1	32.1	2813
D3204C095BBEBK4	3 + earth	95 / 50	1.1	36.4	3772

T : +31 (0)168 468 100

E : sales@incore-cables.com

I : www.incore-cables.com



# N2XH IEC 60502-1

Article code	Number of cores	Nominal cross sectional area mm <sup>2</sup>	Nominal thickness of insulation mm	Nominal overall diameter mm	Nominal weight kg/km
D3204C120BBEBK4	3 + earth	120 / 70	1.3	41.4	4858
D3204C150BBEBK4	3 + earth	150 / 70	1.4	44.2	5680
D3204C185BBEBK4	3 + earth	185 / 95	1.6	48.4	7082
D3204C240BBEBK4	3 + earth	240 / 120	1.7	56.5	9363
D3204C300BBEBK4	3 + earth	300 / 150	1.9	63.3	11939
D3204C1.5BBCBK4	4	1.5	0.7	12	170
D3204C2.5BBCBK4	4	2.5	0.7	13	215
D3204C004BBCBK4	4	4	0.7	14.5	290
D3204C006BBCBK4	4	6	0.7	16	390
D3204C010BBCBK4	4	10	0.7	18.5	600
D3204C016BBCBK4	4	16	0.7	21	870
D3204C025BBCBK4	4	25	0.9	25.5	1365
D3204C035BBCBK4	4	35	0.9	28.5	1875
D3204C050BBCBK4	4	50	1	31.1	2550
D3204C070BBCBK4	4	70	1.1	36.2	3010
D3204C095BBCBK4	4	95	1.1	40.6	3960
D3204C120BBCBK4	4	120	1.3	45.4	5160
D3204C150BBCBK4	4	150	1.4	49.5	6150
D3204C185BBCBK4	4	185	1.6	54.4	7780
D3204C240BBCBK4	4	240	1.7	61.5	9550
D3205C1.5BBGBK4	5	1.5	0.7	13	195
D3205C2.5BBGBK4	5	2.5	0.7	14.5	255
D3205C004BBGBK4	5	4	0.7	16	345
D3205C006BBGBK4	5	6	0.7	17.5	475
D3205C010BBGBK4	5	10	0.7	20	735
D3205C016BBGBK4	5	16	0.7	23	1070
D3205C025BBGBK4	5	25	0.9	25.6	1605
D3205C035BBGBK4	5	35	0.9	28.7	2139
D3205C050BBGBK4	5	50	1	33	2870
D3205C070BBGBK4	5	70	1.1	38.2	4054
D3205C095BBGBK4	5	95	1.1	43	5415
D3205C120BBGBK4	5	120	1.3	50	7039
D3205C150BBGBK4	5	150	1.4	53.2	8447

## Electrical characteristics

Current carrying capacity at 30°C

Nominal cross sectional area mm <sup>2</sup>	No. of cores											
	1		2		3 and 4		7	10	12 and 14	19	24	
	In ground Amps	In air Amps	In ground Amps	In air Amps	In ground Amps	In air Amps	In air Amps	In air Amps	In air Amps	In air Amps	In air Amps	
1.5	31	24	37	26	31	23	18	16	14	13	12	
2.5	41	33	48	36	41	31	23	22	20	18	16	
4	59	45	63	49	53	42	-	-	-	-	-	
6	101	58	80	63	66	54	-	-	-	-	-	
10	128	80	104	86	87	75	-	-	-	-	-	
16	144	107	136	115	133	100	-	-	-	-	-	
25	174	138	173	149	144	127	-	-	-	-	-	
35	206	169	-	-	174	158	-	-	-	-	-	
50	254	207	-	-	206	192	-	-	-	-	-	
70	301	268	-	-	254	246	-	-	-	-	-	
95	343	328	-	-	301	298	-	-	-	-	-	
120	387	382	-	-	343	346	-	-	-	-	-	
150	434	441	-	-	387	395	-	-	-	-	-	
185	501	506	-	-	434	450	-	-	-	-	-	
240	565	599	-	-	501	538	-	-	-	-	-	
300	565	693	-	-	-	-	-	-	-	-	-	
400	749	811	-	-	-	-	-	-	-	-	-	
500	843	940	-	-	-	-	-	-	-	-	-	

T : +31 (0)168 468 100

E : sales@incore-cables.com

I : www.incore-cables.com



# N2XH IEC 60502-1

## Range and Dimensions and electrical characteristics

Article Code	Nominal conductor cross-section (mm <sup>2</sup> )	Core colour	Nominal diameter over insulation (mm)	Maximum tensile strength (N)	Approx. weight (kg/km)	Conductor resistance at 20 °C, DC (ohm/km)	Conductor resistance at 70 °C, 50 Hz (ohm/km)	Maximum current rating (A)
P01G01C1.5EAKBL3	1.5	Blue	3.0	75	20	13.3	15.9	0
P01G01C1.5EAKBN3	1.5	Brown	3.0	75	20	13.3	15.9	0
P01G01C1.5EAKGR3	1.5	Grey	3.0	75	20	13.3	15.9	0
P01G01C1.5EAKG/Y3	1.5	Green/yellow	3.0	75	20	13.3	15.9	0
P01G01C1.5EAKOR3	1.5	Orange	3.0	75	20	13.3	15.9	0
P01G01C1.5EAKRD3	1.5	Red	3.0	75	20	13.3	15.9	0
P01G01C1.5EAKWH3	1.5	White	3.0	75	20	13.3	15.9	0
P01G01C1.5EAKBK3	1.5	Black	3.0	75	20	13.3	15.9	0
P01G01C2.5EAKBL3	2.5	Blue	3.6	125	31	7.98	9.55	21
P01G01C2.5EAKBN3	2.5	Brown	3.6	125	31	7.98	9.55	21
P01G01C2.5EAKGR3	2.5	Grey	3.6	125	31	7.98	9.55	21
P01G01C2.5EAKG/Y3	2.5	Green/yellow	3.6	125	31	7.98	9.55	21
P01G01C2.5EAKRD3	2.5	Red	3.6	125	31	7.98	9.55	0
P01G01C2.5EAKWH3	2.5	White	3.6	125	31	7.98	9.55	0
P01G01C2.5EAKBK3	2.5	Black	3.6	125	31	7.98	9.55	-
P01G01C004EAKBL3	4	Blue	4.2	200	47	4.95	5.92	0
P01G01C004EAKBN3	4	Brown	4.2	200	47	4.95	5.92	0
P01G01C004EAKG/Y3	4	Green/yellow	4.2	200	47	4.95	5.92	0
P01G01C004EAKBK3	4	Black	4.2	200	47	4.95	5.92	0
P01G01C006EAKBL3	6	Blue	4.8	300	70	3.3	3.95	0
P01G01C006EAKBN3	6	Brown	4.8	300	70	3.3	3.95	0
P01G01C006EAKGR3	6	Grey	4.6	300	65	3.3	3.95	36
P01G01C006EAKG/Y3	6	Green/yellow	4.8	300	70	3.3	3.95	0
P01G01C006EAKBK3	6	Black	4.8	300	70	3.3	3.95	0
P01G01C010EAKBL3	10	Blue	6.0	500	110	1.91	2.29	50
P01G01C010EAKBN3	10	Brown	6.0	500	110	1.91	2.29	50
P01G01C010EAKGR3	10	Grey	6.0	500	110	1.91	2.29	50
P01G01C010EAKG/Y3	10	Green/yellow	6.0	500	110	1.91	2.29	50
P01G01C010EAKRD3	10	Red	6.0	500	110	1.91	2.29	50
P01G01C010EAKBK3	10	Black	6.0	500	110	1.91	2.29	50
P01G01C016EAKBL3	16	Blue	7.0	800	165	1.21	1.45	68
P01G01C016EAKG/Y3	16	Green/yellow	7.0	800	165	1.21	1.45	68
P01G01C016EAKBK3	16	Black	7.0	800	165	1.21	1.45	68
P01G01C025EAKBL3	25	Blue	9.0	1250	260	0.78	0.933	89
P01G01C025EAKG/Y3	25	Green/yellow	9.0	1250	260	0.78	0.933	89
P01G01C025EAKBK3	25	Black	9.0	1250	260	0.78	0.933	89
P01G01C035EAKG/Y3	35	Green/yellow	10.5	1750	355	0.554	0.664	110
P01G01C035EAKBK3	35	Black	10.5	1750	355	0.554	0.664	110
P01G01C050EAKG/Y3	50	Green/yellow	12.4	2500	505	0.386	0.463	134
P01G01C050EAKBK3	50	Black	12.4	2500	505	0.386	0.463	134
P01G01C070EAKBK3	70	Black	14.3	3500	695	0.272	0.327	171
P01G01C095EAKBK3	95	Black	16.2	4750	920	0.206	0.249	207

### NOTICE

Incore Cables has endeavored to ensure the accuracy of the data in this publication, however we cannot be liable for the consequences of errors or omissions. All data is subject to change without notice. The installer and/or user assumes all liability for the consequences of the installation and/or use of any of our products in contravention of any applicable law, regulation or code.

**T** : +31 (0)168 468 100

**E** : [sales@incore-cables.com](mailto:sales@incore-cables.com)

**I** : [www.incore-cables.com](http://www.incore-cables.com)

